

LiftMaster 821LMB

# MyQ Smart Garage Hub

Need help? Give us a call.

1-877-826-5443

## Overview

The LiftMaster MyQ Smart Garage Hub is a kit that allows you to integrate a wide range of garage door openers with your Alarm.com account. This solution allows almost any garage door to integrate with Alarm.com through the LiftMaster Integration/Garage Door Control add-on.

It supports two non-MyQ garage doors when coupled with a tilt sensor and up to 16 MyQ devices, such as an 888LM or MyQ-enabled motor. It has one wired connection: AC power. It connects wirelessly to your home network, and the connection is configured via smartphone or PC.

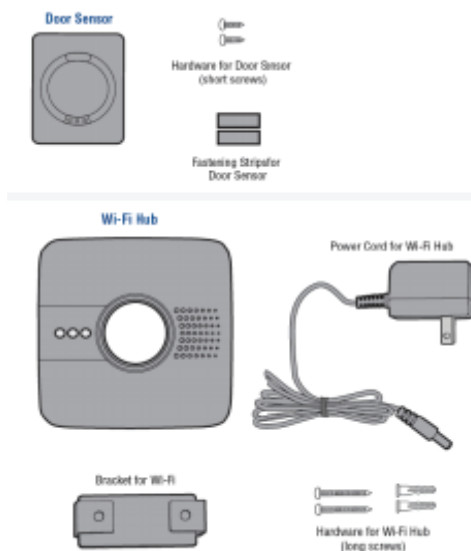
Additionally, it has a speaker and a strobe light/flasher to alert you when the door is closing both audibly and visually, as is required by modern building codes. These are not able to be disabled.

## Getting started

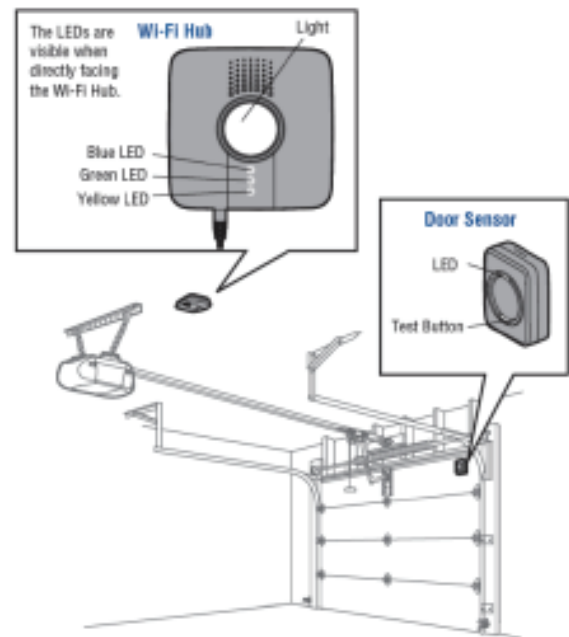
### Required equipment for installation

- Ladder.
- Wi-Fi network name and password.  
**Important:** Sufficient Wi-Fi signal in the garage. For weak signal remedies, see [LiftMaster MyQ Smart Hub - Troubleshooting Guide](#)
- MyQ® Garage Universal Garage Door Controller (821LM, 821LMB, or MyQ-G0301-D).
- Wi-Fi Hub (Gateway- Supports up to 16 MyQ® devices).
- Door sensor (Each Hub supports two door sensors).
- Compatible garage door opener. For more information, see [Compatible Openers](#).
- Partner Portal or Customer Website access through a laptop, tablet, or mobile device.

### Equipment in the MyQ® Garage box



### Reference: Together in garage



## Install door sensor

The MyQ Door Sensor communicates the state of the door (open or closed) to the Wi-Fi Hub. This device is a small tilt sensor that is installed on the top panel of the garage door on the inside of the garage. When it is in a vertical position, the sensor reads as Closed, and when it is in a horizontal position it reads as Open.

The MyQ Door Sensor uses a 3 volt CR2450 Lithium battery. Battery level is measured by the 821LM as the number of cycles (up and down) that the sensor has transmitted since it was first learned into a MyQ Smart Garage Hub. The MyQ Garage Door Sensor reports low battery at 7,000 cycles. It typically stops functioning due to battery depletion after about 10,000 cycles.

The sensor communicates with the hub via Bluetooth. This gives it an operating range of about 30 feet from the hub.

**Important:** The door sensor must be mounted prior to connecting the Wi-Fi Hub to Alarm.com.

There are two Door Sensor installation methods:

LiftMaster 821LMB

# MyQ Smart Garage Hub

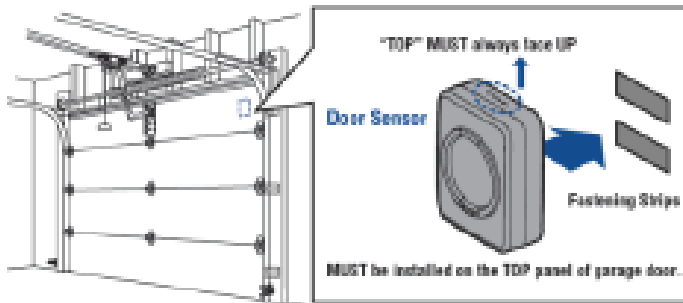
Need help? Give us a call.

1-877-826-5443

## Method 1: Use fastening strips

To install the door sensor using fastening strips:

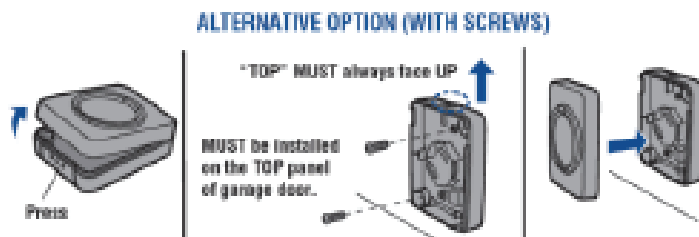
- Position the door sensor vertically and attach to clean, dry location on the top panel of the garage door with the provided strips.



## Method 2: Use screws

To install the door sensor using screws:

- Press in the bottom of the door sensor and remove the front cover.
- Position the door sensor vertically and attach to the top panel of the garage door with the provided screws.
- Replace the front cover.

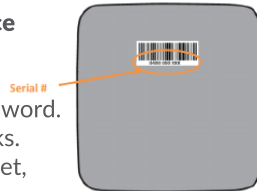


## Set Up

### STEP 1 Set up Wi-Fi on the MyQ® Garage Wi-Fi Hub

#### Method 1: Using Internet Connected Device

- Make note of the home Wi-Fi's network name and its associated security key/password.
- Plug in the Wi-Fi Hub. The Blue LED blinks.
- Verify Wi-Fi is enabled on the laptop, tablet, or mobile device.
- Locate the list of available Wi-Fi networks and select MyQ-nnn network. The nnn is the last three digits of the Wi-Fi Hub's serial number. Android typically shows internet not available after selecting the MyQ-nnn network. This is expected, and if it gives the option to Ignore or Cancel, click **Ignore**.



- Once the phone is connected to the MyQ-nnn network, the blue light on the 821LM goes from blinking blue to a solid blue LED.
- Launch the mobile device's web browser and enter **setup.myqdevice.com** into the web browser's address bar. If unable to load try using a different browser. Alternatively, enter **setup.myqhome.com** or **192.168.0.1** in the URL bar to navigate to the same web page.

**Note:** Always type in the full URL address, do not let it auto complete, and do not type **www** or **Https** before the web address.

- Follow the steps in the MyQ® Wi-Fi Setup page to complete the setup. It is required to enter the Wi-Fi name and password for the home network.
- When prompted, **do not install the MyQ® Garage app**. When the LED light is solid green, Wi-Fi connection has been established and close the internet browser.

#### Method 2: Using WPS

- Put the Hub into WPS mode: With Hub powered and Blue LED blinking, press and release the Hub's Image result for gear icon button. The Hub's Blue LED turns on solid.
- Within one minute, press and release the **WPS** button on the router.
- Within a few minutes, the Hub connects to the network. The Green LED turns on solid to indicate successful connection.

#### Method 3: Using Bluetooth (iPhone users only)

- Plug in the Wi-Fi Hub. The Blue LED blinks.
- Connect the Apple® mobile device to the Wi-Fi network.
- On the Apple® mobile device, go to Settings > Bluetooth, and turn on Bluetooth.
- Find the Bluetooth MyQ-nnn device and select MyQ-nnn device to pair. The nnn is the last 3 digits of the Wi-Fi Hub's serial number.

**Note:** If the phone believes the Hub is not connected to the internet, try forgetting the device before pairing. To do this, select the blue information icon to the right of the device name and select forget this device. The MyQ-nnn device reappears for pairing in few seconds.

When prompted, allow phone to share Wi-Fi network settings with the Wi-Fi Hub (this may take a minute). When the LED light turns green the device has successfully connected to the Wi-Fi network.

**Important:** Do not choose to install the LiftMaster iPhone application.