

DW40-345

Door & Window Sensor

Need help? Give us a call.
1-877-826-5443

Setup

STEP 1

Check the packing slip for the number that corresponds with the placement of the sensor. Then remove the sensor from the box and go to the installation location.

STEP 2

See your installation guide to install the transmitter with provided double-sided tape or screws. Then place the transmitter horizontally or vertically in the desired window or door location, or on the frame (fig 1).

STEP 3

Using the provided double-sided tape (recommended), place the magnet within $\frac{1}{4}$ of an inch from the transmitter, with the arrow matching the alignment marks on the transmitter (fig 2).

STEP 4

See the included operation instructions for additional warnings, what to avoid when mounting the sensor, and programming.

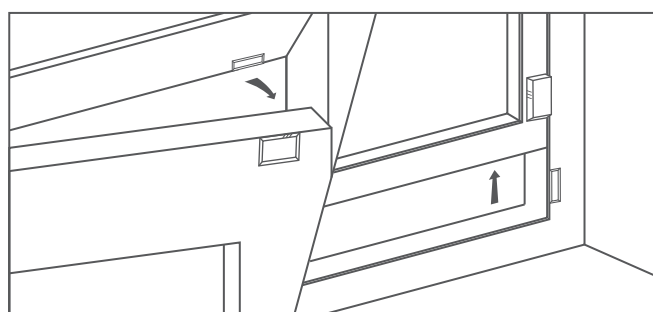
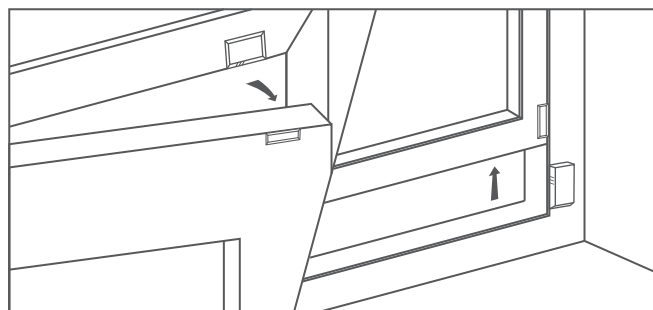
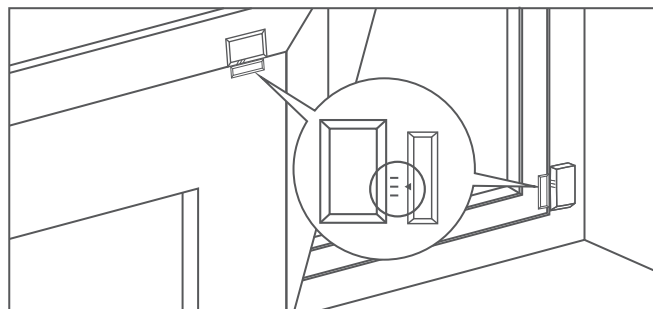
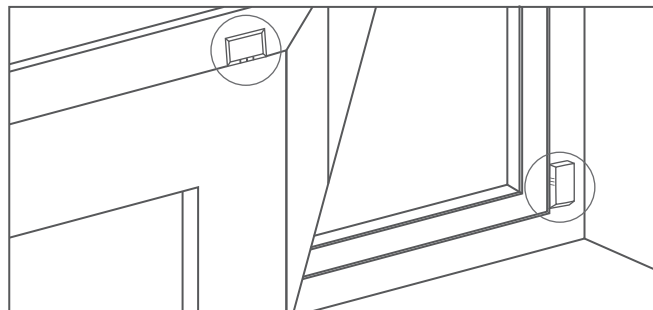
STEP 5

Test the sensor by first putting the control panel in System Test mode. Next, open the door or window where the sensor is installed (fig 3). Listen for the panel confirmation. Lastly, exit the system test mode.

Note

Make sure nothing is blocking the gap of the transmitter and magnet (e.g. window frame lip, wood strip, etc.).

To temporarily bypass: Press the button for 3 seconds until you see the red LED, and open the door. Once the door is closed, the sensor will re-arm.



This figure shows alternate installation locations of transmitter and magnet.